



Product(s):

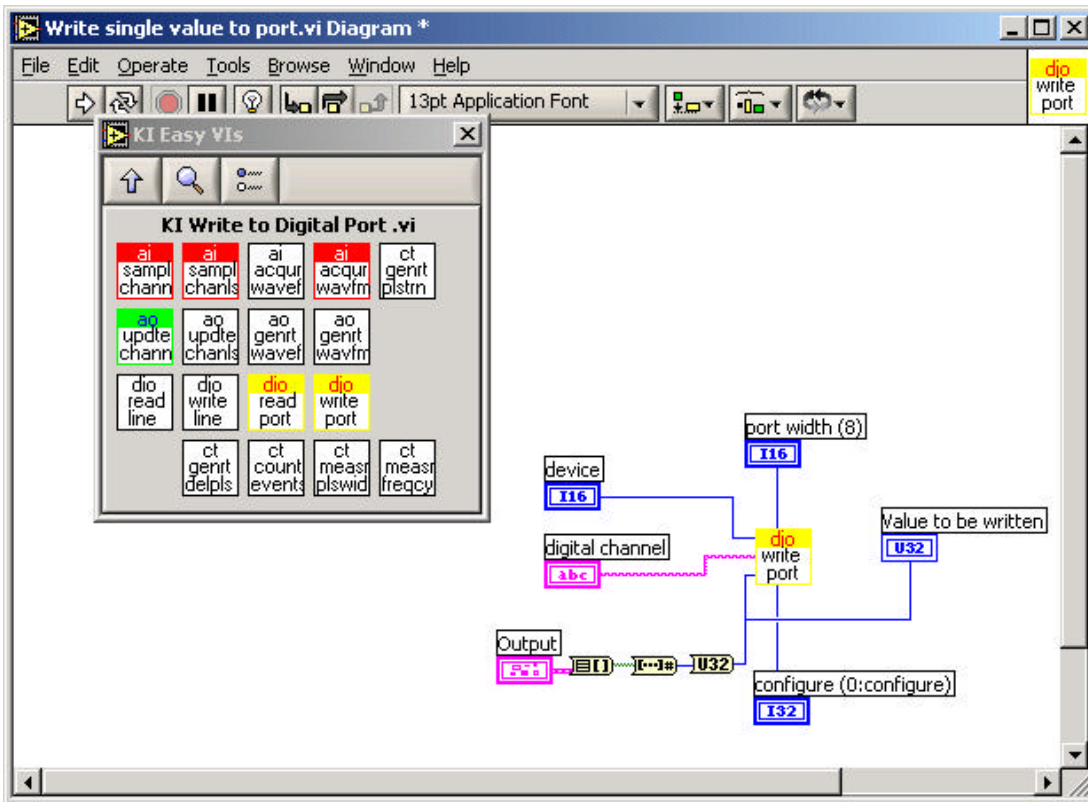
ISA bus Digital I/O Boards: PIO-12, PIO-24, PIO-32IN, PIO-32OUT, PIO-32I/O, PIO-SSR-24, PIO-SSR-48, PIO-SSR-120, PIO-HV, PDISO-8, REL-16, REL-16/W, PIO-96, and PIO-96J

Question: What are my programming options for a PIO (ISA) series board in LabVIEW?

Answer: Two options exist:

Option 1. A full suite of VIs based on the DriverLINX driver are available by download. There are easy, intermediate and advanced VIs in this package. For those familiar with National Instruments' VIs, these will seem very familiar. Since they are based on DriverLINX, they will work in Win9x to WinXP. Below is a screen shot of the two high level VIs and a Keithley provided example VI called KI Write to Digital Port VI. The LabVIEW VIs and the DriverLINX driver are available from our download center under your PIO model board. They are found under Download Center, Software Drivers.

Requirements: LabVIEW 5.0 or higher and the DriverLINX drivers.



Option 2. LabVIEW provides VIs for direct register level control: In Port and Out Port. The versions of these VIs that ship with LabVIEW are for Win9X and will not function in WinNT or higher. However, National Instruments has upgrades for these available for download from their web site (file name: AccessHW.zip). These replacement VIs have the same look, feel, and function as the ones that ship with the LabVIEW. Use of these VIs require that you manually assign a base address to your PIO board and that you use this value in your program. Below is a screen capture of what the use of these Port VIs might look like:

